



Pathways

A curated gateway to internet clinical tools

Pathways had
4.9 million
page views
from logged in
clinicians and
their teams in
2021



What is Pathways?

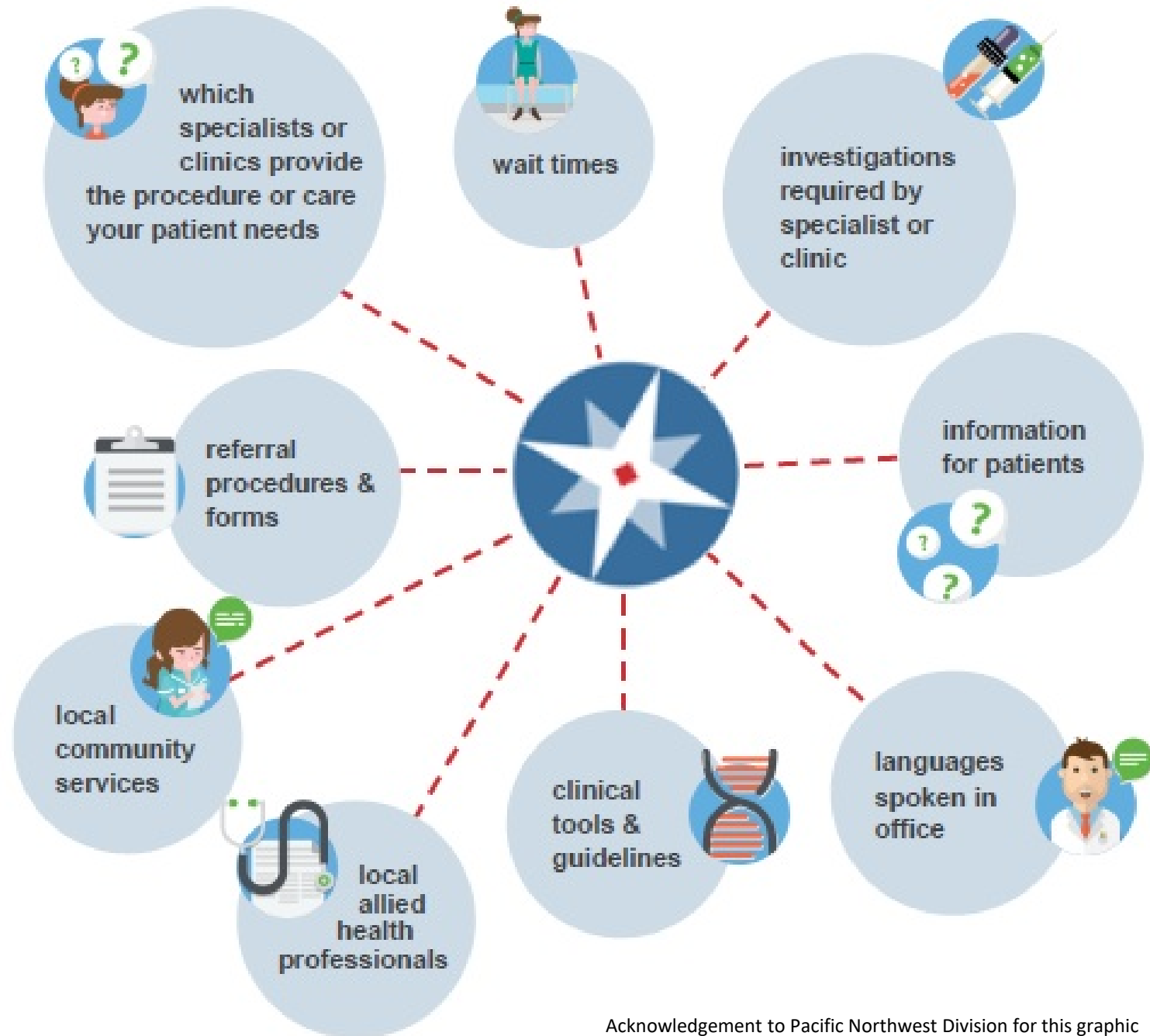
Pathways is an online resource created by family doctors and their teams to provide information about specialists and referrals as well as Primary Care Network (PCN) Supports and more!

Useful for Physicians and NPs and Allied Provider Primary Care Network team members.

Pathways is a registered non-profit.

Pathways is funded as part of the Physician Master Agreement.

The funding sits in General Practitioner Services Committee (GPSC) budget.



Acknowledgement to Pacific Northwest Division for this graphic



Pathways Evaluation

GPSC completed an independent evaluation of Pathways in 2015



Pathways

ACCESS TO - LOGGED IN CLINICIAN PATHWAYS

Available to ALL Physicians in BC and their teams

All Team Members supporting
Patient Medical Homes (PMH)
and

Primary Care Networks (PCN) including:

MOAs, RNs, NPs,

PCN Allied Support Providers e.g Dietitians, Social Workers Mental
health workers and navigators, Seniors Navigators, FNHA Navigators etc)



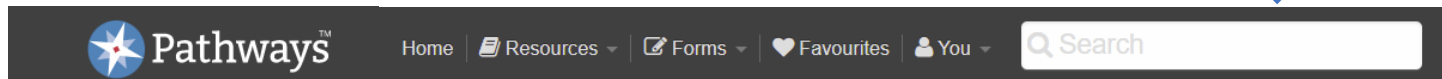


In addition to being a listing of Specialists, Clinics and Services . . .
Pathways is a **curated gateway** to internet sites & tools for physicians



There are so many useful websites,
and it is overwhelming to remember
them all and click through and navigate
them from their landing pages.

The Pathways team makes sure you land
on the page you need,
from the most useful and trusted
websites,
when you use the Pathways search.





A few of the useful websites that Pathways helps you to navigate directly to the page you need from the **Pathways search** are:

GPAC (Guidelines and protocols)

HealthlinkBC

BCCDC

Choosing Wisely

PAD (Pharmacist academic detailing)

Bugs and Drugs

BC Cancer

HelpGuide

WHO

BCCSU (BC Centre on Substance Use)

Canadian Task Force on Preventive Health Care



Pathways makes it possible to use internet resources in real time during a patient visit



Pathways also contains a curated collection of emailable patient information from trusted sources

SELECT SPECIALTY OR SERVICE ▾		INFECTIOUS DISEASE		
Specialists	Clinics & Pooled Referrals	Community & Health Authority Services	Physician Resources	Patient Info
Missing Information? Let us know.		Email selected items		
Title ▾	Categories			
Antibiotics - When They Are Needed and When They Are Not (Bugs and Drugs)	Websites	♥	✉	🔊
Bed Bugs Handout - Multilingual (HealthLinkBC)	Handouts	♥	✉	🔊
Chickenpox Handout (HealthLinkBC)	Handouts	♥	✉	🔊
Chlamydia Handout - Multilingual (HealthLinkBC)	Handouts	♥	✉	🔊
Clostridium Difficile (badgut.org)	Handouts	♥	✉	🔊
Cold, Runny Nose – Self Care Without Antibiotics (Bugs and Drugs)	Handouts	♥	✉	🔊
Conjunctivitis - Pinkeye Handout (HealthLinkBC)	Handouts	♥	✉	🔊
Cough - Self Care Without Antibiotics (Bugs and Drugs)	Handouts	♥	✉	🔊



Clinicians can also save their “favourites” as easy quick picks for emailing



When accessed through Pathways, patient information is:

- emailable from a Pathways no-reply email
- emailable in bundles
- sorted into collections by specialty topic
- easy paste into EMR list of items sent



Show Me

Button Options to Narrow Search

To Just **Patient Info** or Just to **Physician Resources**

Home | Resources | Forms | Favourites | You | diabetes

Show Me | Everything | Specialists | Clinics | Community & HA Services | Physician Resources | **Patient Info** | Areas

Patient Info: Videos

[Diabetes ABCs - Mike Evans Video \(2 minutes\)](#)

Patient Info: Handouts

- [Diabetes Action Plan \(Diabetes Canada\)](#)
- [Diabetes and High Blood Pressure Management Handout \(Diabetes Canada\)](#)
- [Diabetes - Basic Meal Planning \(Diabetes Canada\)](#)
- [Diabetes - Blood Glucose Testing in Type II 2 Diabetes - Optimal Use \(CADTH\)](#)
- [Diabetes Eating - Dietary Basics \(Diabetes Canada\)](#)
- [Diabetes Foot Care Handout \(Diabetes Canada\)](#)
- [Diabetes Glycemic Index for Food \(Diabetes Canada\)](#)
- [Diabetes Insulin Injection Techniques \(Fit4Diabetes Canada\)](#)
- [Diabetes - Living with Type 2 Diabetes \(RxFiles\)](#)
- [Diabetes Medications - Alpha-glucosidase Inhibitor - Acarbose \(Canadian Diabetes Association\)](#)
- [Diabetes Medications - Biguanide - Metformin \(Canadian Diabetes Association\)](#)
- [Diabetes Medications - DPP-4 inhibitors - Linagliptin, Saxagliptin, Sitagliptin \(Canadian Diabetes Association\)](#)
- [Diabetes Medications - GLP - 1 Receptor Agonist \(Canadian Diabetes Association\)](#)
- [Diabetes Medications - Non-sulfonylurea Secretagogues - Nateglinide, Repaglinide \(Canadian Diabetes Association\)](#)
- [Diabetes Medications - SGLT2 Inhibitors - Dapagliflozin, Empagliflozin \(Canadian Diabetes Association\)](#)
- [Diabetes Medications - Sulfonylureas - Gliclazide, Glimepiride, Glyburide \(Canadian Diabetes Association\)](#)
- [Diabetes Patient Resources \(GPAC\)](#)
- [Diabetes Peripheral Neuropathy Handout \(Diabetes Canada\)](#)

Home | Resources | Forms | Favourites | You | diabetes

Show Me | Everything | Specialists | Clinics | Community & HA Services | **Physician Resources** | Patient Info | Areas

Physician Resources: Care Pathway / Algorithm

- [Diabetes Management Algorithm \(GPAC\)](#)
- [Diabetes Screening Algorithm \(GPAC\)](#)
- [Diabetes - Vascular Protection Medications \(Diabetes Canada\)](#)
- [Diabetic Foot Screening Pocket Chart \(Int. Diabetes Federation\)](#)

Physician Resources: Calculators

- [A1C to Average Glucose Level Calculator \(American Diabetes Association\)](#)

Physician Resources: Scale and Scoring Tools

- [Diabetes Foot Neuropathy 60 Second Screening Tool \(Wounds Canada.ca\)](#)

Physician Resources: Guidelines

- [Diabetes Blood Glucose Self Monitoring Guidelines \(CDA\)](#)
- [Diabetes Guidelines \(GPAC\)](#)

Request Access

To request access or

If you have been using a group clinic login, request your own individual access key & start saving favourites

Go to www.pathwaysbc.ca and select “request access”

Public Directories



Medical Care Directory

Information about doctors and medical clinics in BC.

[Go to Medical Care Directory](#)



Community Service Directory

Publicly available services and programs, in participating communities.

[Go to Community Services](#)

Clinician Login

 E-mail

 Password

[Log in to Pathways](#)

[Forgot your password?](#)

[I have an Access Key](#) · [Request access](#)

