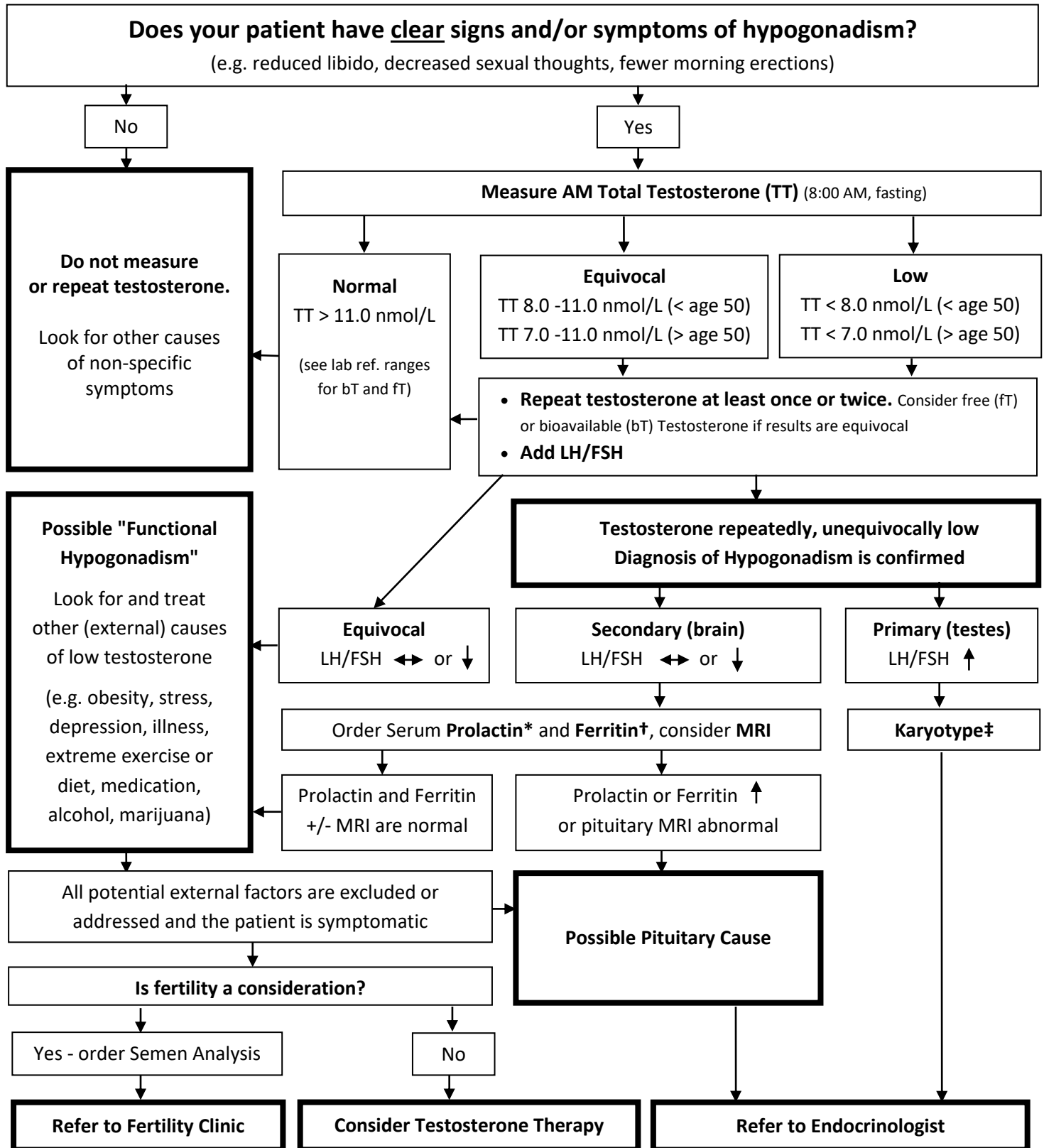


Figure 1. Initial investigation of men with symptoms and/or signs of hypogonadism



Investigations: \*Prolactin for prolactinoma, †Ferritin for hemochromatosis, ‡Karyotype for Klinefelter syndrome  
 Symbols: ↓ Reduced, ↑ Increased, ↔ Equivocal or no change.

MRI - decision to order an MRI depends upon the degree of hypogonadism and presence of other abnormalities.  
 Note: The decision to initiate testosterone therapy without referral to an Endocrinologist depends on the clinical judgement of the primary investigator (e.g. for men > age 50 with unequivocal hypogonadism and no other abnormalities, who are not considering fertility in the future, testosterone may be initiated without referral)